

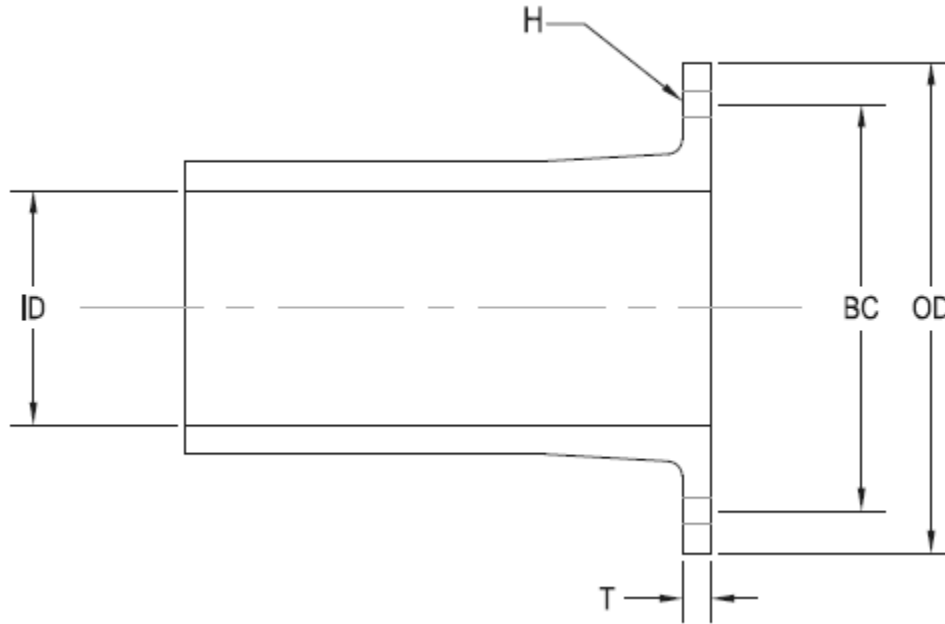


# Perry Fiberglass Products, Inc.

LEADERS IN THE DESIGN AND MANUFACTURING OF DUCTWORK, CARBON ADSORBERS, SCRUBBERS, FANS, PIPING, & TANKS

5415 Village Drive Rockledge, Florida 32955 / PHONE: 321-609-9036 / FAX: 321-609-9003 / www.Perryfiberglass.com

## Flange Dimensions per ASTM D-3982



Diameter "A"	Thickness "T"	Outside Diameter "OD"	Bolt Circle "BC"	Bolt Hole Diameter "H"	# of Holes	Bolt Size
3"	1/2"	7-3/8"	6"	7/16"	4	3/8"
4"	1/2"	8-3/8"	7"	7/16"	4	3/8"
6"	1/2"	10-3/8"	9"	7/16"	8	3/8"
8"	1/2"	12-3/8"	11"	7/16"	8	3/8"
10"	1/2"	14-3/8"	13"	7/16"	12	3/8"
12"	1/2"	16-3/8"	15"	7/16"	12	3/8"
14"	1/2"	18-3/8"	17"	7/16"	12	3/8"
16"	1/2"	20-3/8"	19"	7/16"	16	3/8"
18"	1/2"	22-3/8"	21"	7/16"	16	3/8"
20"	1/2"	24-3/8"	23"	7/16"	20	3/8"
24"	1/2"	28-3/8"	27"	7/16"	20	3/8"
30"	5/8"	34-3/8"	33"	7/16"	28	3/8"
36"	5/8"	40-3/8"	39"	7/16"	32	3/8"
42"	5/8"	46-3/8"	45"	7/16"	36	3/8"
48"	5/8"	54-3/8"	52"	9/16"	44	1/2"
54"	5/8"	60-3/8"	58"	9/16"	44	1/2"
60"	5/8"	66-3/8"	64"	9/16"	52	1/2"
66"	3/4"	72-3/8"	70"	9/16"	60	1/2"
72"	3/4"	78-3/8"	76"	9/16"	60	1/2"
84"	3/4"	90-3/8"	88"	9/16"	72	1/2"
96"	3/4"	102-3/8"	100"	9/16"	80	1/2"